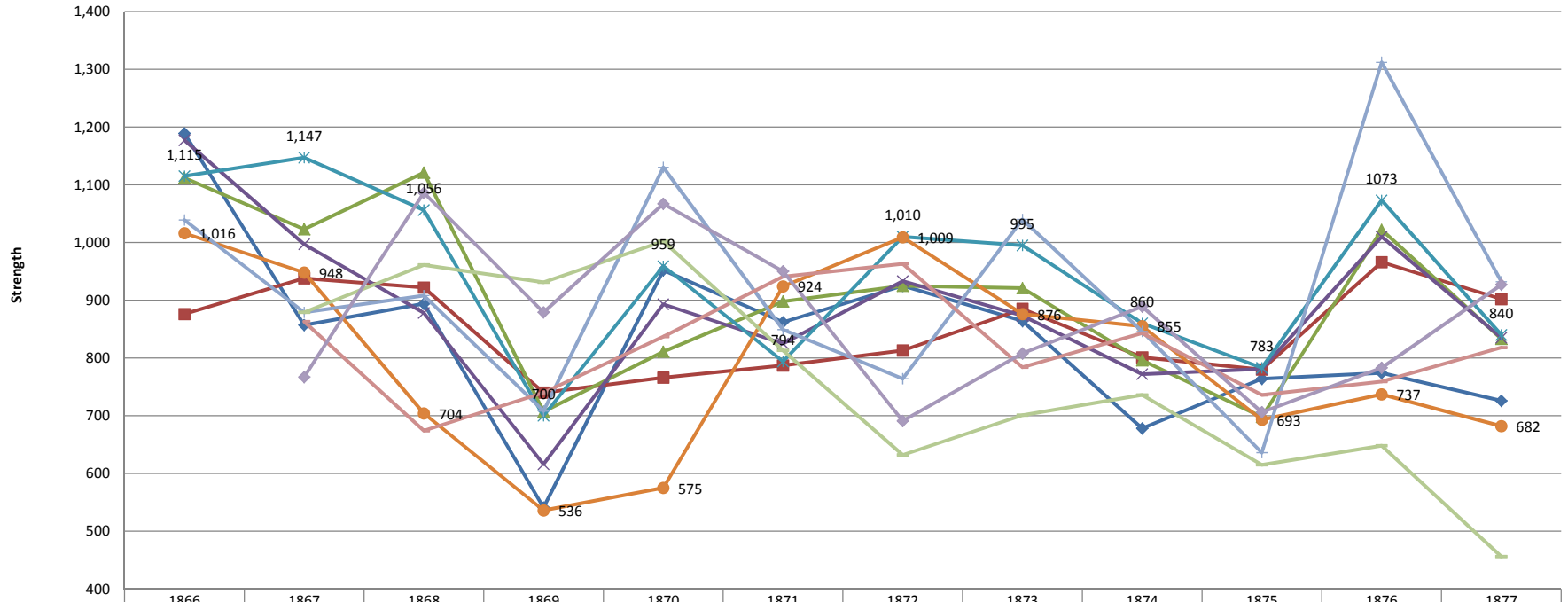


U.S. Cavalry Regiments 1866-1877



	1866	1867	1868	1869	1870	1871	1872	1873	1874	1875	1876	1877
1st U.S. Cavalry	1,189	857	894	541	952	862	925	864	678	764	774	726
2nd U.S. Cavalry	876	938	922	740	766	787	813	885	801	780	966	902
3rd U.S. Cavalry	1,112	1,023	1,121	707	811	898	925	921	796	698	1022	833
4th U.S. Cavalry	1,177	997	878	616	893	825	933	873	772	781	1010	835
5th U.S. Cavalry	1,115	1,147	1,056	700	959	794	1,010	995	860	783	1073	840
6th U.S. Cavalry	1,016	948	704	536	575	924	1,009	876	855	693	737	682
7th U.S. Cavalry	1,039	879	908	708	1,130	849	764	1040	846	636	1312	932
8th U.S. Cavalry		863	674	740	837	941	963	784	843	736	759	818
9th U.S. Cavalry		879	961	931	1,002	813	632	701	736	615	648	456
10th U.S. Cavalry		767	1,086	879	1,067	950	691	808	889	706	783	927